

MY OUTDOOR CAT IS NOT COMING HOME – WHAT CAN I DO?



PREPARE EVERYTHING AT HOME

Leave doors/windows open, even at night.

Set up a hiding place with a feeding station at home - especially if the cat cannot be made access to the house.

Set up the feeding station in the garden or on the terrace/balcony and monitor it with a wildlife camera. Checking who comes to the feeding station is often helpful. For wild animals, such as hedgehogs, you can position the feeding station at a higher level. For territorially dominant neighbor cats, ask their owners not to allow their furry friend to roam for a few days/nights.

Thoroughly search the immediate surroundings - basements, attics, garages, sheds, woodpiles, trees, pools - and ask neighbors for permission to enter their property or leave their cellar compartments/other gates open for a few days.

If the apartment is on an upper floor, consider setting up a cat ladder to the balcony.

HOW TO SET UP A FEEDING STATION

Choose a quiet, protected, darkened, and weatherproof retreat. If such a place is not available, it helps to equip a box/crate accordingly, make it waterproof with foil, and camouflage it with natural materials. Your ideas and possibilities are limitless here.

Stock the feeding station with wet food. Also, serve it warm to intensify the scent. Tuna is always very well received. Of course, these treats also attract other cats and wildlife.

Position the wildlife camera about 4 to 5 meters away from the feeding station. This way, you also have a view of the surroundings. Be sure to obtain the permission of the property owner/hunting leaseholder and ensure that data protection regulations are followed. You can rent a wildlife camera from us for a fee.

Check and replenish the feeding station at the same time every day, e.g., 08:00 and 20:00. Regularity is often the key to success.

For information to passersby, it's best to hang a flyer about the feeding station.

NIGHT SEARCH

At night - especially in the early morning hours between 02:00 and 04:00 - go on the search. Use a flashlight to illuminate all hedges, cellar shafts, and other hiding places for reflecting cat eyes.

Pause frequently, lure with a soft voice, wait, and listen.

If your cat is familiar with a treat jar, take it along and shake it occasionally, wait, and listen.

Repeat the search night after night, varying the times slightly.

MY OUTDOOR CAT IS NOT COMING HOME – WHAT CAN I DO?



HANGING UP FLYERS

Attached is an example of a flyer. Important details include a good photo of your missing cat, telephone number, and the request that sightings be reported with photos/videos. Add a note that the flyers should be reliably removed after your cat returns.



VERMISST

Katze, 2 Jahre, dreifärbig mit weiß, kastriert



KEINE EINFANGVERSUCHE!!

Bei SICHTUNGEN – wenn möglich mit Foto/Video – bitte sofort anrufen:

Tel. +43 xxx xxxxxxxx

Dieser Flyer wird wieder abgenommen. Bitte zwischenzeitlich nicht entfernen. Herzlichen Dank!

K9 Tiersuche Tirol e.V. Hotline 0720 900050

Print the flyers in larger quantities, e.g., 200 copies in color, make them weatherproof with document sleeves and adhesive tape. Have friends and acquaintances (so that your scent is not spread everywhere -> see home trail) place them in well-visible and frequented locations. Hang flyers on lampposts, dog waste bag dispensers, bridge railings, shops, entrance doors in residential areas, parking lots, walking and cycling paths, and distribute them in mailboxes.

Posting your flyer on the Internet can also be helpful. The Facebook pages of animal shelters, lost & found animals, city/municipality, companies, and tourism companies have proven to be particularly helpful.

MY OUTDOOR CAT IS NOT COMING HOME – WHAT CAN I DO?

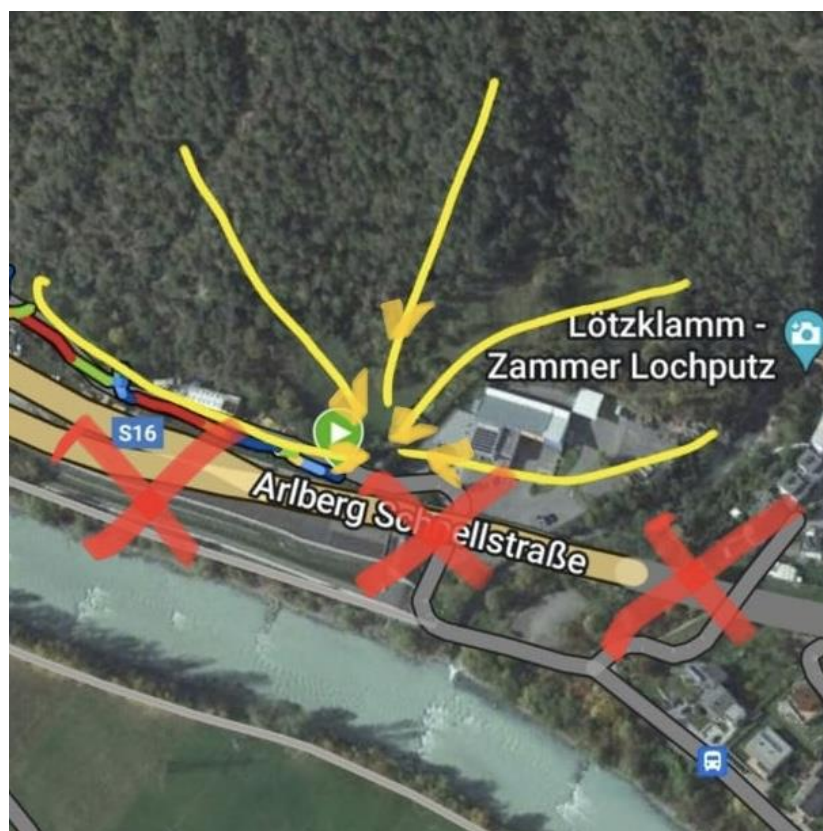


A SELECTION OF PLACES FOR THE MISSING REPORT:

Police	City/Municipality	Veterinarians	Animal Shelters	Road Maintenance
Hunters	Austrian Federal Railways (ÖBB)	Asfinag	Animaldata, Tasso & Co	

HOME TRAIL

With the home trail, you create a scent trail from various directions to the home address. The example image shows that the trail (yellow arrows) is always drawn from the turning point back to the place of residence:



What can I use for the home trail:

- ➔ A worn piece of clothing from the reference person. Attach this to a rope/leash and drag it behind you.
- ➔ Fill urine into a PET bottle and dilute it with water. Drill small holes in the lid of the bottle and, on the way back, turn the bottle upside down so that the mixture can drip out.
- ➔ The same variant also works with tuna water and is recommended for cats that have not yet developed a bond with their (new) owners. Caution: several cats may feel addressed to follow the scent trail to the residence.

Where not to drag a home trail: across busy streets, railroad tracks, tunnels...

MY OUTDOOR CAT IS NOT COMING HOME – WHAT CAN I DO?



NICE TO KNOW

Patience is a crucial factor in searching for your cat. Cats like to hide, and it can take days or weeks for them to leave their hiding place after a frightening situation and/or make their way home. Stay patient and continue to regularly supervise/check the feeding station, renew flyers, update social media, and inquire with the listed places.

MY CAT HAS BEEN SPOTTED OR HAS ACCEPTED THE FEEDING STATION

Ask the observer to send photos/videos if possible and inquire about specific characteristics/behaviors to ensure that it is your own cat.

Once it is confirmed that it is your missing cat, position yourself at the sighting location. Also, do this at the feeding station if your cat is visible on the camera. Sit there and wait, lure softly, or talk to the cat. It's best to go to the sighting point well-equipped with clothing, food, and drinks... it can take many hours for your cat to regain trust in you.

What not to do under any circumstances: search frantically, approach your cat, or even chase after it.

If your cat's location is known but she won't come when called, set up a live trap with food and a wildlife camera. You can rent a live trap of the appropriate size from us for a fee. The live trap should also be camouflaged and made weatherproof.

MY OUTDOOR CAT HAS BEEN HIT OR HAS FALLEN FROM A GREAT HEIGHT OR ESCAPED RIGHT AFTER MOVING

Even in this case, the above tips will help your cat find its way home.

WHY A SEARCH DOG DOES NOT ACHIEVE THE DESIRED SUCCESS

A missing cat may perceive a search dog as a threat, leading to fear and the possibility of being chased. There is a significant risk that the search dog could startle the cat, causing it to move to a new area with unfamiliar dangers.

DO YOU HAVE ANY QUESTIONS?

If you have any further questions, we would be happy to provide guidance. Please leave a message on our hotline at 0720 900050, and we will get back to you.